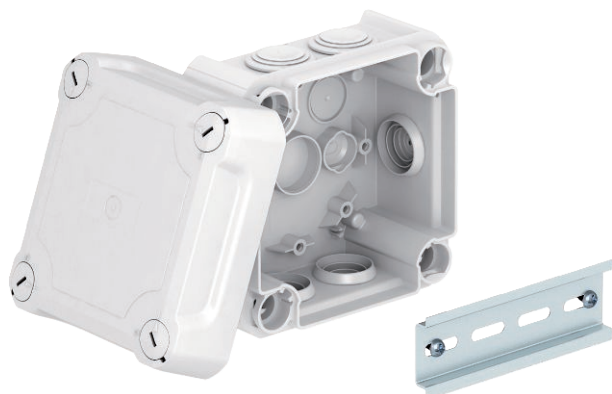


Technical data sheet

Junction box T60, plug-in seal, elevated cover

Item no. 2007710



Junction box for the connection of cables and lines indoors and in protected outdoor areas. Square design with plug-in seals to the sides and knock-out entries in the bottom. Suitable for wall and ceiling mounting and on mounting panels. With the option to fasten inside and to mount via the corner domes. High, transparent cover with quick lock, sealable. Made from halogen-free materials.

With hat profile rail.

Junction box according to DIN EN 60670. Flame-resistant to DIN EN 60695/2/11, test temperature 650 °C. Impact resistance IK07 according to DIN EN 50102.



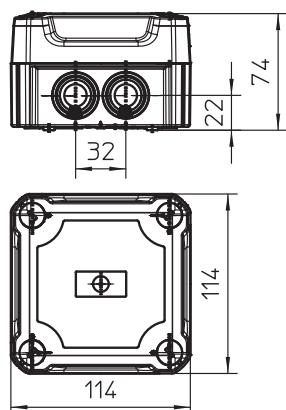
PP/PC Polypropylene/polycarbonate

| | |
|--------------------------------------|---|
| Additional product text, instruction | acc. to VDE 0471/DIN 695 Part 2-1, test temperature 650°C |
| Additional product text 1 | With membrane insertion and hat profile rail |
| Additional product text 2 | Clear internal dimensions: 100x100x65 mm |

Master data

| | |
|--------------------------|-------------------------------|
| Item no. | 2007710 |
| Type | T 60 HD LGR |
| Description 1 | Junction box |
| Description 2 | with raised cover |
| Dimension | 114x114x76 |
| Colour | Light grey |
| RAL number | 7035 |
| Material | Polypropylene / polycarbonate |
| Material symbol | PP/PC |
| Smallest sales unit (VG) | 1 Piece |
| Weight | 17,18 kg/100 pc. |

Technical data



| | |
|--------------------------------|---|
| Length | 114,00 mm |
| Width | 114,00 mm |
| Height | 74,00 mm |
| Clear internal dimensions | 100x100x65 mm |
| Dimension LxWxH | 114x114x74 mm |
| Dimension | 114x114x74 mm |
| Expandable | <input checked="" type="checkbox"/> |
| No. of entries | 7 |
| Type of entry | Cable |
| Type of entry | Plug-in seal |
| Type of housing penetration | Other |
| Measured insulation voltage Vi | 500,00 V |
| Equipment | Without |
| Cover | Not transparent |
| Cover fastening | Screwed |
| Entries | 7xM25 |
| Entry from rear | <input checked="" type="checkbox"/> |
| Explosion-tested version | <input type="checkbox"/> |
| Flame-resistant | acc. to VDE 0471/DIN 695 Part 2-1, test temperature 650°C |
| Shape | Square |
| Function maintenance (ETIM) | Without |
| For Ex zone | Without |
| For Ex zone gas | Without |

Technical data sheet

Junction box T60, plug-in seal, elevated cover

Item no. 2007710



Technical data

| | |
|------------------------------------|-------------------------------------|
| For Ex zone dust | Without |
| Halogen-free | <input checked="" type="checkbox"/> |
| With screening | <input type="checkbox"/> |
| with lid | Yes |
| With cover | <input checked="" type="checkbox"/> |
| Installation type | Wall/ceiling mounting |
| Mounting type | Wall/ceiling mounting |
| Nominal voltage | 500,00 V |
| Protection rating | IP66 |
| Protection rating | IP66 |
| Protection rating IK code | IK07. |
| Sealable | <input checked="" type="checkbox"/> |
| max. permitted ambient temperature | -5,00 - 60,00 °C |
| Transparent lid | <input type="checkbox"/> |
| Weatherproof | <input checked="" type="checkbox"/> |