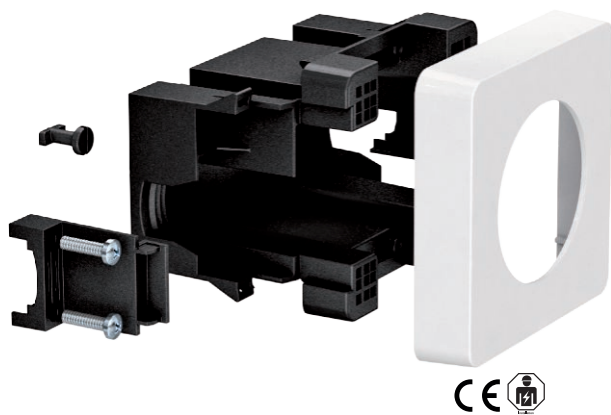


Technical data sheet

Accessory mounting box for CEE installation, type 71GDCEE 16 A/32 A Item no. 6288635



PA Polyamide

Accessory mounting box for the installation of a 3 or 5-pole CEE socket, 16 A or 32 A.

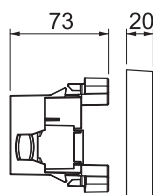
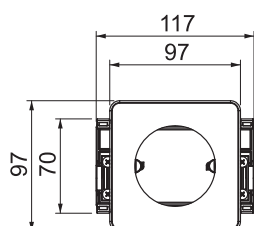
Included in the delivery:

- 1 front-locking accessory mounting box with 4-point fastening track of 52 x 52 mm to 70 x 70 mm
- 1 cover frame in pure white to hide the fastening equipment
- 2 external strain reliefs for sheathed cables of up to Ø 18 mm
- 2 sash locks for the optional fastening to duct bottoms with a C rail

Master data

Item no.	6288635
Type	71GDCEE
Description 1	Accessory mounting box
Description 2	for CEE sockets
Dimension	117x76,5x73
Material	Polyamide
Material symbol	PA
Smallest sales unit (VG)	1 Piece
Weight	13,70 kg/100 pc.

Technical data



Number of units	1
Version for	Closed
Fastening track	Other
Device type	CEE
Halogen-free	<input type="checkbox"/>
With connection compartment	<input checked="" type="checkbox"/>
Strain relief option	<input checked="" type="checkbox"/>