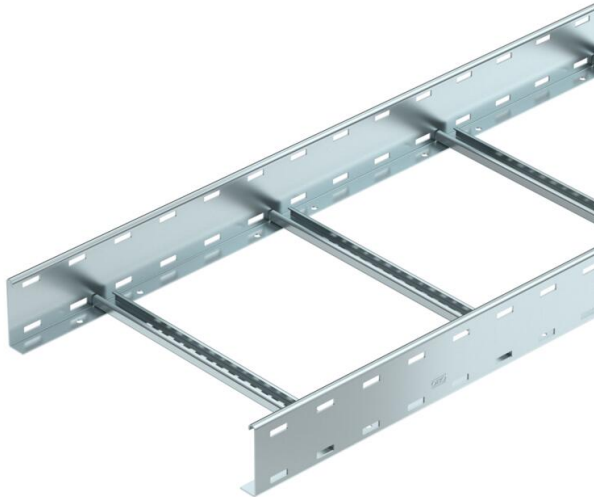


# Technical data sheet

## Cable ladder LG 100, 3 m VS FS

Item number: 6487127



Cable ladder with perforated side rail of side height 100 mm with riveted C profile rungs, open in an upwards direction. Assignment of the rungs on both sides possible using U clamps.  
Magnetic shield insulation without cover 10 dB, with cover 15 dB.



<b>St</b>	Steel
<b>FS</b>	Strip galvanized

### Master data

Item number	6487127
Type	LG 1045 VS FS
Description 1	Cable ladder
Description 2	perforated
Manufacturer	OBO
Dimension	100x450x3000
Colour	zinc
Material	Steel
Surface	Strip galvanized
Surface standard	DIN EN 10346
Smallest sales unit	3
Unit of quantity	Metre
Weight	505.967 kg
Weight unit	kg/100 m

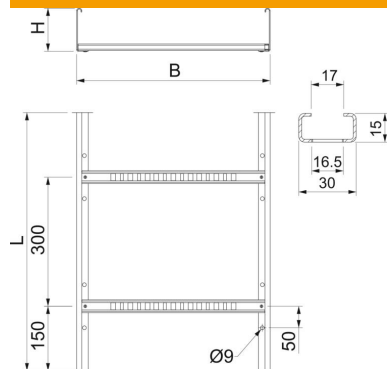
# Technical data sheet

## Cable ladder LG 100, 3 m VS FS

Item number: 6487127



### Dimensions



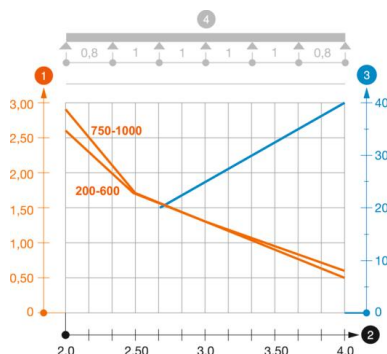
Length	3,000 mm
Width	450 mm
Height	100 mm

### Technical data

Version of the rungs	Profile perforated
Side rail version	Flat profile
Fastening of rung	Blind riveted
Mounting system fastening type	Floor Ceiling Wall
Maintain electrical functions	yes
Usable cross-section	358 cm <sup>2</sup>
Usable cross-section	35800 mm <sup>2</sup>
Rustproof steel, pickled	no
Side perforation	yes
Rung distance	300 mm
Wide-span version	no
Rail thickness	2 mm

### Loads

Support spacing 2.0 m	2.6 kN/m
Support spacing 2.5 m	1.7 kN/m
Support spacing 3.0 m	1.3 kN/m
Support spacing 4.0 m	0.6 kN/m



### Load diagram, cable ladder, type LG 10... VS

- 1 Permitted cable tray/ladder load in kN/m without man load
- 2 Support width in m
- 3 Rail bend in mm at permitted kN/m
- 4 Load scheme during testing
- Load curve with cable tray/ladder width in mm
- Strut bend curve according to support width