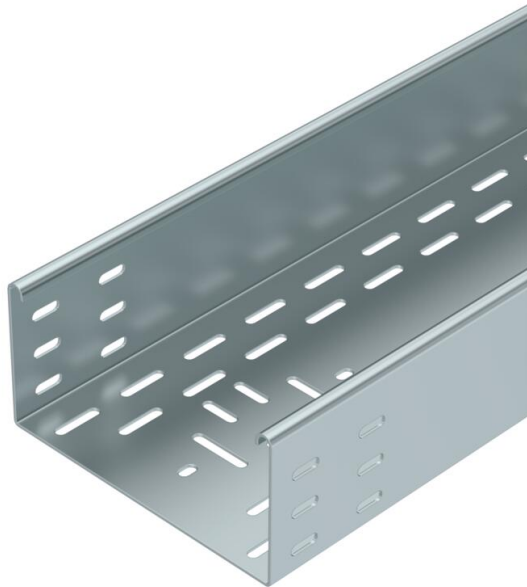


Technical data sheet

Cable tray BKRS 100 FS

Item number: 6062002



Heavy-duty, walkable cable tray system BKRS with base perforation, in 100 mm side height.
The cable tray has connector perforations on both sides.
Straight connectors should be ordered separately and in the appropriate quantity.
Magnetic shield insulation without cover 20 dB, with cover 50 dB.



| | |
|-----------|------------------|
| St | Steel |
| FS | Strip galvanized |

Master data

| | |
|------------------------------------|---------------------------|
| Item number | 6062002 |
| Type | BKRS 1020 FS |
| Description 1 | Cable tray BKRS |
| Description 2 | walkable |
| Manufacturer | OBO |
| Dimension | 100x200x3000 |
| Colour | zinc |
| Material | Steel |
| Surface | Strip galvanized |
| Surface standard | DIN EN 10346 |
| Smallest sales unit | 3 |
| Unit of quantity | Metre |
| Weight | 614.567 kg |
| Weight unit | kg/100 m |
| CO2 Footprint (GWP) Cradle-to-Gate | 14,5342 kg CO2e / 1 Meter |

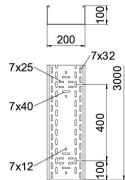
Technical data sheet

Cable tray BKRS 100 FS

Item number: 6062002



Dimensions



| | |
|-----------------|----------|
| Length | 3,000 mm |
| Length | 10 ft |
| Width | 200 mm |
| Width | 8 in |
| Height | 100 mm |
| Height | 4 in |
| Plate thickness | 0.08 in |
| Plate thickness | 2 mm |
| Dimension B | 200 mm |
| Dimension H | 100 mm |
| Dimension L | 3,000 mm |

Technical data

| | |
|---|-----------------------|
| Connector version | Without connectors |
| Mounting system fastening type | Floor |
| Walkable | yes |
| Maintain electrical functions | no |
| With cover | no |
| Mounting perforation in base | yes |
| NATO hole pattern | no |
| Usable cross-section | 171 cm ² |
| Usable cross-section | 17052 mm ² |
| Rustproof steel, pickled | no |
| Side perforation | no |
| Wide-span version | no |
| Load test type according to IEC 61537 | Type II |
| Type of connector, cable support system | Screwed |