

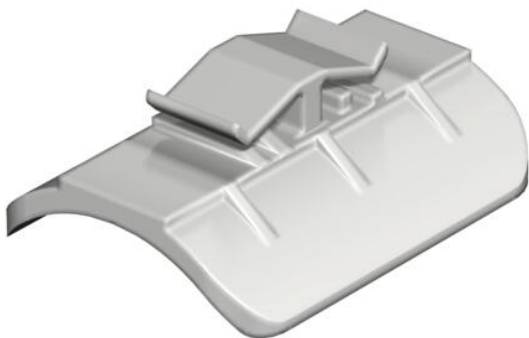
Technical data sheet

Counter-trough, plastic 16–17 mm slot width

Item number: 1195581



Counter trough 52–58 mm



PP Polypropylene

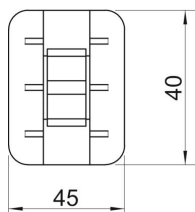
Master data

Item number	1195581
Type	2058 58 LGR
Description 1	Counter-trough
Manufacturer	OBO
Dimension	52-58mm
Colour	Light grey; RAL 7035
Material	Polypropylene
Smallest sales unit	100
Unit of quantity	Piece
Weight	0.43 kg
Weight unit	kg/100 pc.
CO2 Footprint (GWP) Cradle-to-Gate	0,0165 kg COe / 1 Piece

Dimensions



Dimension B	45 mm
Dimension H	11.5 mm
Dimension L	40 mm



Technical data sheet

Counter-trough, plastic 16–17 mm slot width

Item number: 1195581



Technical data

Counter-trough/clip version	Counter sleeve
Suitable for max. cable diameter	58 mm
Halogen-free	yes
Clamping range D, max.	58 mm
Clamping range D, min.	52 mm