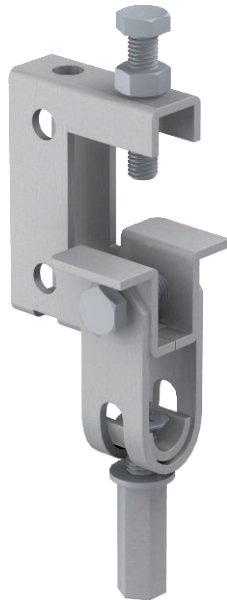


Technical data sheet

Screw-in beam clamp, with hinge

Item no. 1488111



Two-hinge beam clamp for fastening on beams without welding and drilling. The maximum load is dependent on the load direction.

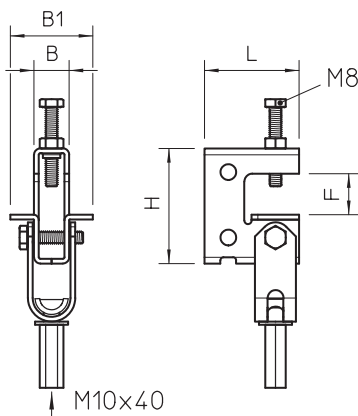


St	Steel
ZL	Zinc slat

Master data

Item no.	1488111
Type	TK FL G
Description 1	Hinged support bracket
Description 2	Model "E"
Dimension	0-24mm
Material	Steel
Material symbol	St
Surface	Zinc slat
Surface symbol	ZL
Smallest sales unit (VG)	10 Piece
Weight	34,00 kg/100 pc.

Technical data



Connection type/component	Other
Fastening type	Screw
Breaking load	2,80 kN
Breaking load	2.800,00 N
Flangethickness for threaded rod	0,00 - 24,00 mm
For metric threaded rod	M10
Thread size M	10
Hinge, adjustable	<input checked="" type="checkbox"/>
Hinged	<input checked="" type="checkbox"/>