

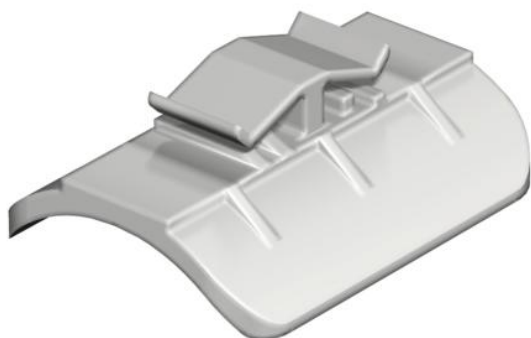
Technical data sheet

Counter-trough, plastic 16–17 mm slot width

Item number: 1195522



Counter trough 46–52 mm



PP Polypropylene

Master data

Item number	1195522
Type	2058 52 LGR
Description 1	Counter-trough
Manufacturer	OBO
Dimension	46-52mm
Colour	Light grey; RAL 7035
Material	Polypropylene
Smallest sales unit	100
Unit of quantity	Piece
Weight	0.391 kg
Weight unit	kg/100 pc.

Technical data sheet

Counter-trough, plastic 16–17 mm slot width

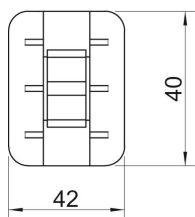
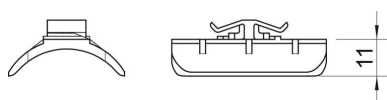
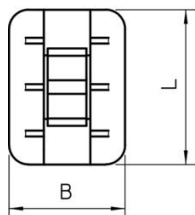
Item number: 1195522



Dimensions



Dimension B	42 mm
Dimension H	11 mm
Dimension L	40 mm



Technical data

Counter-trough/clip version	Counter sleeve
Suitable for max. cable diameter	52 mm
Halogen-free	yes
Clamping range D, max.	52 mm
Clamping range D, min.	46 mm