

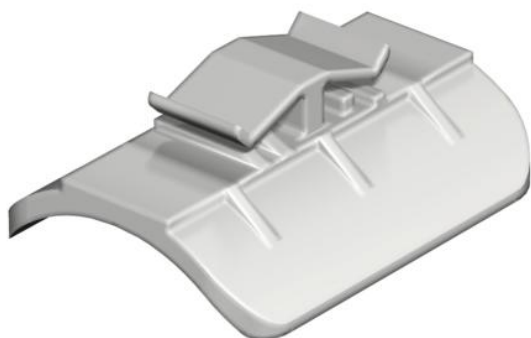
# Technical data sheet

Counter-trough, plastic 16–17 mm slot width

Item number: 1195468



Counter trough 40–46 mm



**PP** Polypropylene

## Master data

|                     |                      |
|---------------------|----------------------|
| Item number         | 1195468              |
| Type                | 2058 46 LGR          |
| Description 1       | Counter-trough       |
| Manufacturer        | OBO                  |
| Dimension           | 40-46mm              |
| Colour              | Light grey; RAL 7035 |
| Material            | Polypropylene        |
| Smallest sales unit | 100                  |
| Unit of quantity    | Piece                |
| Weight              | 0.385 kg             |
| Weight unit         | kg/100 pc.           |

# Technical data sheet

Counter-trough, plastic 16–17 mm slot width

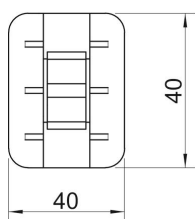
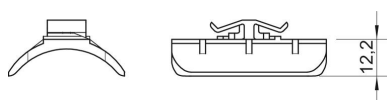
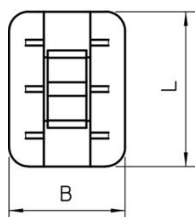
Item number: 1195468



## Dimensions



|             |         |
|-------------|---------|
| Dimension B | 40 mm   |
| Dimension H | 12.2 mm |
| Dimension L | 40 mm   |



## Technical data

|                                  |                |
|----------------------------------|----------------|
| Counter-trough/clip version      | Counter sleeve |
| Suitable for max. cable diameter | 46 mm          |
| Halogen-free                     | yes            |
| Clamping range D, max.           | 46 mm          |
| Clamping range D, min.           | 40 mm          |